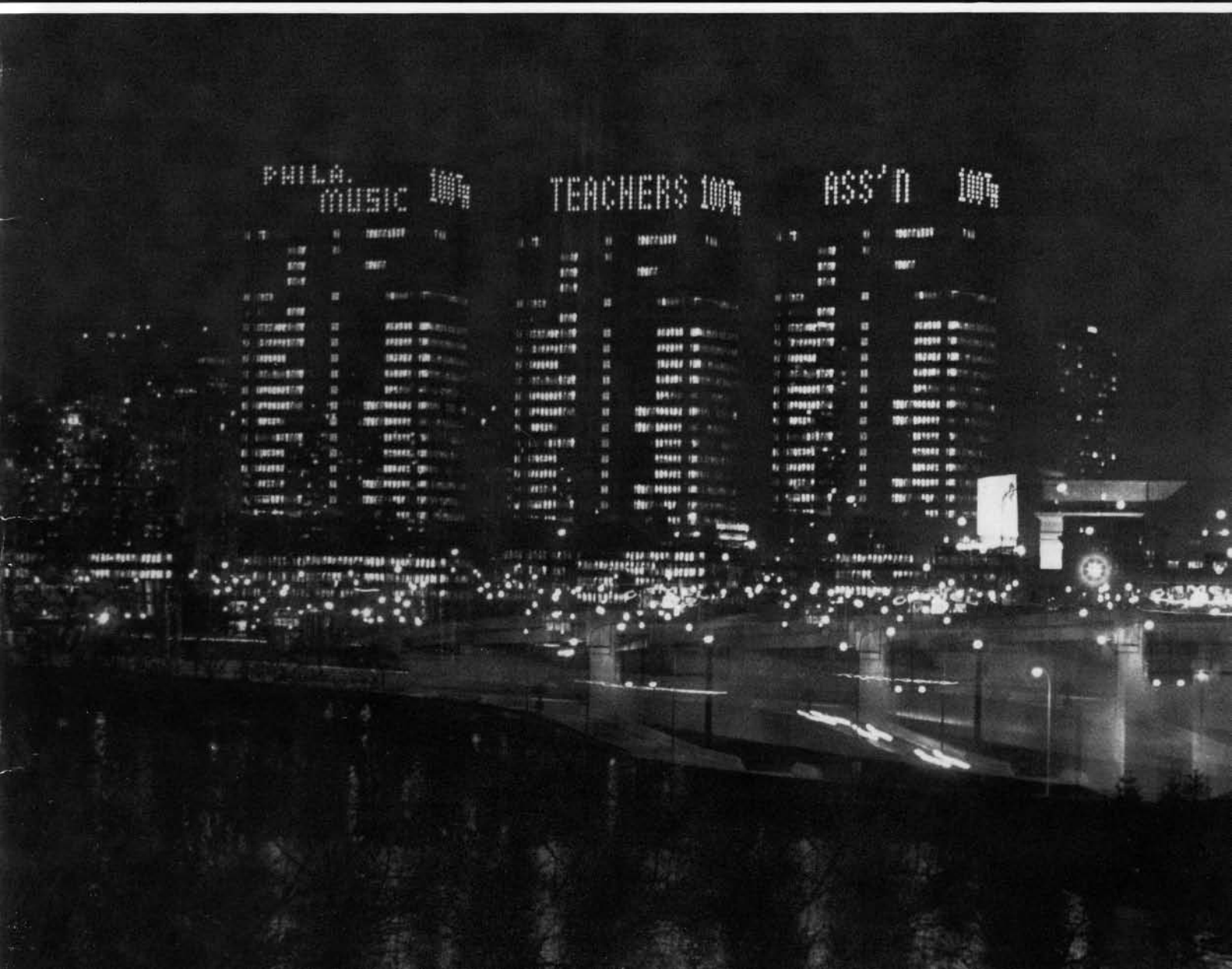
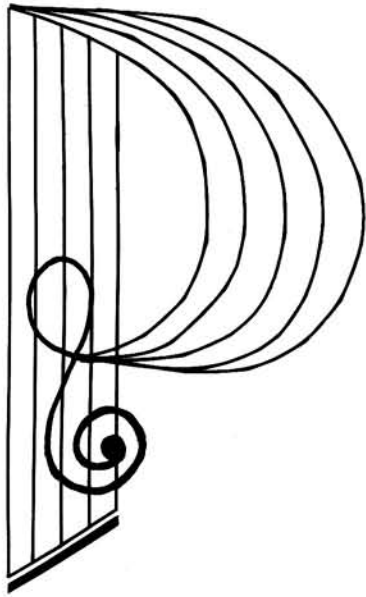


PHILADELPHIA MUSIC TEACHERS ASSOCIATION

100th Anniversary





**PHILADELPHIA
MUSIC
TEACHERS
ASSOCIATION**

The First 100 Years

The Centennial Book Committee wishes to thank the many individuals who made this booklet possible. Among those whose assistance with research, editing, advice, and encouragement were especially helpful were Joy Miller Kiszely, Geraldine Miller, Rosalie Talone, Maria Ezerman Drake, Carol Wilson, and David Quick. We especially wish to express our appreciation to the Theodore Presser Company for their cooperation in permitting access to their archives, where so much vital information was stored.

Evelyn C. Quick, Chairman
Joseph Arcaro
Dr. Samuel Hsu
Philadelphia, Pa. 1991

Cover photo courtesy of Philadelphia Electric Company

THEODORE PRESSER

(1848-1925)

An Appreciation

On the occasion of our Centennial Celebration, we pay special tribute to the man who created Philadelphia Music Teachers Association and who fostered and encouraged it during its early years. Theodore Presser was born in Pittsburgh, Pennsylvania, on July 3, 1848. His father, who died when Theodore was 10 years old, had come to America from the Saar district of Germany. At 14, the boy was working in an iron foundry, helping to mold cannon balls for the Army during the Civil War. At 16, he was working for C.C. Mellor, Pittsburgh's leading music merchant. Mr. Mellor was impressed with Theodore's industry and after-hours efforts to improve stock-keeping and other details of operation, eventually making him the manager of the sheet music department. Theodore was now determined to make music his life's work. He had been reared in a home where everyone had participated in musical enjoyment. Theodore and his brother played guitars and went on many serenading parties with Stephen Foster. But Theodore had had no formal training on the piano, and, at 19, began lessons with a local teacher.

In 1868, Theodore entered Mount Union College (Alliance, Ohio). From 1869 to 1874, he was an instructor at that college as well as at Ohio Northern University and Miami conservatory (Xenia, Ohio). After a year of study at the New England Conservatory of Music, he returned to Ohio and founded the music department at Ohio Wesleyan University. From his yearly salary of \$1,000, he saved enough to attend Leipzig Con-

servatory, where he studied for two years under Reinecke, Jadassohn, and others.

On his return from Europe in 1880, he became Professor of Music at Hollins College in Virginia. It was here in 1883, with only \$250 to back him, that he began to publish *The Etude*, a modest, 10-page paper. It was an instant success, and American teachers who did not have the opportunity to attend domestic or European conservatories to learn the fine points of their profession were delighted to find a source of information in this inexpensive magazine. Mr. Presser, who acted as editor for many years, analyzed the music included as a supplement and recommended other compositions of similar character. So many teacher-subscribers wrote to *The Etude* for copies of the music that Mr. Presser expanded into selling and publishing music.

In 1884, Mr. Presser had moved *The Etude* to Philadelphia, and it was here that he established his publishing house, The Theodore Presser Co. His efficient approach to his business, with emphasis on courtesy and prompt service to customers, resulted in one of the great success stories of the American music publishing business. By the turn of the century, Theodore Presser Co. had expanded from a modest mail-order house into one of the largest musical enterprises in the world. Mr. Presser became a wealthy man, but he did not forget his humble beginnings, his early struggles as a student, or the very real problems confronting music teachers. In 1906, he was taking steps to establish his Home for Retired Music Teachers; in 1913, a modern, fire-

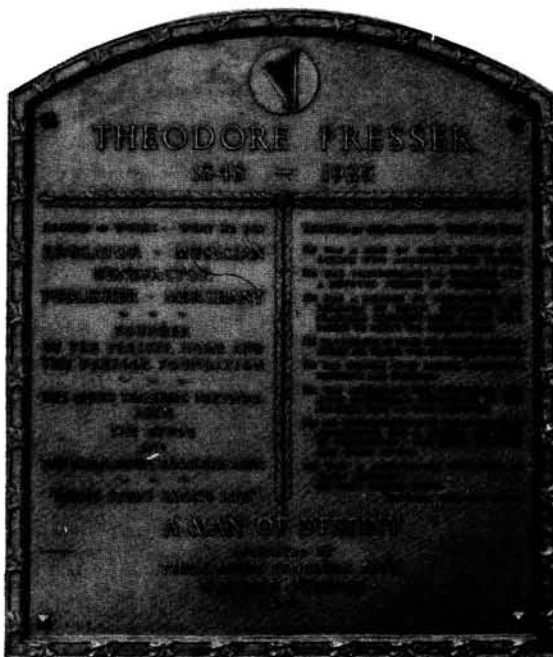
proof building was dedicated in the Germantown section of Philadelphia. At one time, there were as many as 75 residents. By 1980, however, there were only 36, and the building had grown obsolete and expensive to run. The Presser Foundation was permitted to close the home, moving the remaining residents to other established accommodations. About half of the Foundation's income is now devoted to assisting retired music teachers.

The Presser Foundation was established by various deeds of trust in 1916 and 1922. Over the years, besides assistance to retired teachers, the Foundation has not only made possible the erection of a dozen music buildings, but has contributed music rooms, music libraries, and musical equipment to institutions of higher learning all

across the country. It awards scholarships to promising students. It buys concert tickets and distributes them free of charge to music teachers and students who could not otherwise afford them. It has aided a variety of musical and educational programs nationwide.

In 1891, Theodore Presser organized the Philadelphia Music Teachers Association. Until its affiliation with Music Teachers National Association in 1989, it was the oldest independent music teachers' group in the country. PMTA considers its association with Theodore Presser, a man wholly dedicated to music and music teaching, a priceless heritage. The institutions that he founded continue to exert a profound and lasting influence on the music profession.

*“On this, our 100th Anniversary, we salute you,
Theodore Presser!”*



Bronze memorial plaque honoring Theodore Presser, presented to Presser Home for Retired Music Teachers in 1941.

Philadelphia Music Teachers Association: 1891 — 1991

On the opening page of *The Etude* magazine for April 1891 are a number of musical news items, among them a simple, one-line entry: "Philadelphia is about to organize a local music teachers' association." The founder was Theodore Presser, teacher and, later, music publisher, who was intensely interested in improving the quality of music teaching and promoting the professional interests of the teachers. The new organization, known as the Philadelphia Music Teachers Association, set about to pursue these goals.

In 1912, PMTA launched "Musical Philadelphia," a campaign to attract music students to the city by publicizing its cultural advantages. The following season, a special rally meeting was held for the purpose of discussing the protection of the business interests of teachers.

The organization met regularly during the winter months to discuss music and education with noted speakers and artists. These activities were reviewed in *The Etude* from time to time, so that PMTA enjoyed national attention, and teachers in other cities observed with interest. An item in a 1915 issue of *The Etude* reports that the New York State Music Teachers were discussing the formation of a local organization for New York City based on the successful Philadelphia model. PMTA's president, Dr. James Francis Cooke, visited New York to advise them.

One important recurring event of this early era was PMTA's Annual Dinners. These were ambitious affairs where eminent civic leaders and prominent musicians were invited to speak and/or perform. Among these guests were Phi-

lander Claxton (U.S. Commissioner of Education in 1916), Edward Bok, John Freund (*Musical America*), Philip Goepf, Cyrus H.K. Curtis, Reginald DeKoven, Percy Grainger, Owen Wister, Victor Herbert, John Philip Sousa, Rudolf Ganz, Hans Kindler, Kathryn Meisle, Leopold Auer, Joseph Lhevinne, Olga Samaroff, and Ernest Hutcheson. The first of the annual dinners attracted 50 people, but by the Silver Anniversary, the number attending had grown to 250. A similarly large crowd of members and guests attended the 50th Anniversary in 1941. *The Etude*, in reporting on this occasion, said:

The work of the Association has been extremely constructive, and many important movements in Philadelphia's musical educational life have been inaugurated by PMTA. Its annual banquets, held at leading hotels, have presented as guests of honor many of the foremost public men and women in America in other callings, who have come forward to testify as to the great benefits of music study in their lives. This has been followed by widespread publicity, which has been of inestimable value in convincing the general public that music study is of immense practical value in the daily life of the individual.

At this Golden Jubilee, the organization dedicated a bronze plaque to the memory of Theodore Presser and presented it to the Presser Home for Retired Music Teachers. (With the closing of the Home in 1980, the plaque was transferred to the new Presser Company building in Bryn Mawr.)

An article in a 1935 issue of *The Etude* reported that a new activity, The Little Recital Hour, had been initiated by PMTA.

Having begun with a program on the last Saturday of the month, within the first year they have created such enthusiasm, that already there is a demand for two of these in a month. Teachers report that their pupils are thrilled with the idea of "going down town" to play for other teachers and students. The policy followed is: First of all, no teacher may present more than one composition on a program, and there can be no encores. The programs are timed to one hour so that they may not grow tiresome.

The program for March 1935 included students representing 19 teachers. The students performed on the piano, violin, cello, cornet, and Hawaiian guitar. There was also one vocalist. Most of the music performed came from the lighter teaching repertoire of the day, but Bach, Beethoven, Debussy, and Rachmaninoff were also represented on the program. The Little Recital Hour was a continuing activity until 1963, when the policy of pre-performance auditions was introduced.

In January 1945, PMTA gave a dinner in honor of Dr. James Francis Cooke, a former president of the organization who was still editor of *The Etude*. The speaker at that dinner was Friedelind Wagner, granddaughter of Richard Wagner and great-granddaughter of Franz Liszt. Several hundred guests attended, and Dr. Cooke was presented with a large volume of letters of tribute from all parts of the country. (Outside of this event, PMTA's activities during World War II and the following decade are not well documented.)

When Rosalie Talone became president in the early 1960's, she found an organization that was primarily social, the principal event of the year being the traditional Annual Dinner. There were no regularly scheduled meetings and no

planned calendar of events. Occasional lectures were offered, but these were loosely scheduled. The Little Recital Hour had come to be handled in the same casual way. Mrs. Talone and her Board reorganized the Association's overall program and developed the format we follow today. The Concerto/Ensemble recital took its place on the calendar along with the solo recitals, all student activities requiring pre-performance auditions. As a result, the quality of student performances improved noticeably.

Since the financial condition of the organization was very poor, the Talone administration sponsored fund-raising workshops, the revenues from which helped put the treasury on a firm financial footing. Among these successful projects were a two-day workshop by Anna Liva and a series of workshops by Dr. Andor Kiszely. At the same time, Mrs. Talone acquired the use of Greek Hall in Wanamakers Department Store, where PMTA met for many seasons. It was an advantageous move: Wanamakers was centrally located in the city, offering not only a suitable auditorium, but opportunities for shopping, browsing in the music department, and luncheon in the lovely dining room. When changes at Wanamakers made activities there unfeasible, PMTA made use of facilities at Temple University, the New School of Music, and Jacobs Music Company. At present, the organization enjoys the use of the recital hall and meeting rooms of the University of the Arts, on South Broad Street.

In 1989, during the presidency of Sr. Jane McGettigan, the organization voted to join the Music Teachers National Association (MTNA). Organized by Theodore Presser in 1876, MTNA offers expanded opportunities for PMTA's members and their students to take part in regional and national festivals and competitions. This step encourages a heightened awareness of teaching excellence, a move that Mr. Presser would applaud. A necessary requirement for regional and national participation are preliminary performances at the local level. For this

purpose, PMTA has established its own Dorothy Sutton Performance Festival, which takes place in early autumn. From this festival, students who are well prepared go on to the State competitions, held later in the season. In 1990, the organization inaugurated its Annual Spring Performance Festival, an event that differs somewhat from the formal recital or competition and has proven a popular educational tool. Students are evaluated by an adjudicator, and awards are given on the basis of individual performance.

The 100th Anniversary of the organization is being celebrated with pride and enthusiasm. The Philadelphia Electric Company put PMTA's name in lights on its building display in October 1990, as shown on the front cover of this

booklet. Pianist Claude Frank presented a fine lecture-recital on the Beethoven Piano Sonatas as a Special Centennial Event. The program was underwritten through the generosity of the Presser Foundation.

Life, the city, and the world have changed since those first meetings of PMTA in 1891, presenting new challenges to this organization of music teachers. PMTA has made changes of its own in order to better serve its members and the profession. We are confident that this spirit of dedication to the profession will continue to meet the challenges of the times as we move into our second century of service.



Officers and guests at the Philadelphia Music Teachers' Association 1916 annual dinner. FRONT ROW, SEATED (FROM LEFT TO RIGHT) — Hon. Philander P. Claxton, U.S. Commissioner of Education; Mrs. Celeste D. Heckscher; Mr. Owen Wister (author of *The Virginian*); Mr. Alberto Jonas; Mr. John C. Freund (editor of *Musical America*); Dr. Hugh A. Clarke; Mr. John Luther Long; Mr. Richard Zeckwer; Mr. Henry Le Barre Jayne. SECOND ROW, FROM LEFT TO RIGHT (STANDING) — Mrs. Horatio Connell; Miss Agnes Clune Quinlan; Mr. Henry S. Fry; Mr. Albert Hustler; Miss Anna Barrow, Chairman Executive Committee; Mr. Constantin von Sternberg; Miss Emma A. Price, Secretary of the PMTA; Mr. James Francis Cooke, President of the PMTA; Mr. W.W. Shaw; Mrs. Theodore Presser; Mr. Theodore Presser. THIRD ROW, FROM LEFT TO RIGHT (STANDING) — Dr. Eugene E. Ayres, Vice-President PMTA; Mrs. Frances E. Clark; Mr. Horatio Connell; Mr. Stanley Reiff; Mr. Franklin E. Cresson; Mr. Wassili Leps; Mrs. Wassili Leps; Dr. G.C. Anthony; Mrs. G.C. Anthony; Mr. W.E. Hetzell; Mrs. W.E. Hetzell; Mrs. James Francis Cooke. FOURTH ROW, FROM LEFT TO RIGHT (STANDING) — Mr. Charleton L. Murphy; Mr. Frederick E. Hahn; Miss A. Foy; Mrs. Hendrik Ezerman; Mr. Hendrik Ezerman; Miss May Porter; Mr. Frederic Peakes; Mr. Thilo von Westernhagen; Mr. Herman Bleck; Mr. Arthur L. Tubbs. According to the original caption, "a larger flashlight picture, showing the 250 guests at the table, was unsuccessful."

Philadelphia Music Teachers Association

Roster of Presidents

1891-1991

- William Wolsieffer:** First President of the Association. Took part in organizing the Pennsylvania State Music Teachers Association in 1889 and acted as the first President of that organization.
- Dr. Hugh A. Clarke:** Organist, teacher, and composer. Also active in the newly established Music Teachers National Association (MTNA). Professor of Science of Music, University of Pennsylvania. Published a treatise on harmony and counterpoint, as well as textbooks for organ and piano.
- M. Virginia Peck**
- Enoch W. Pearson**
- Thomas a Becket:** Pianist and teacher. Specialized as an accompanist. Taught piano at Girard College, Philadelphia, for 50 years. Active on executive committees for both MTNA and Pennsylvania State Music Teachers Association. President of MTNA in 1904.
- Mary Gregory Murray:** Pianist and lecturer. Active in the Pennsylvania State Music Teachers Association.
- Daniel Batchellor**
- Richard Zeckwer:** Pianist and teacher. Studied in Leipzig. Joined the faculty of the newly opened Philadelphia Musical Academy. Became its Director in 1876, continuing in the capacity for 40 years. Organist at the Philadelphia Cathedral. Active in MTNA.
- Dr. James Francis Cooke:** Editor, teacher, composer. Studied at Royal Conservatory at Würzburg, Germany. Taught piano for many years, developing methods based on psychological experiments. Received Mus.D. from New York State University. Contributed to musical journals here and abroad. Wrote books on a variety of musical subjects. Named editor of *The Etude* in 1907 and served in this position for 40 years. Also served as President of the Presser Foundation.
- Dr. Frances Elliot Clark:** Earned Mus.D. from Temple University. Served as Education Director for RCA Victor Company.
- Stanley Muschamp:** Composer, teacher, critic, and lecturer. Trained in Europe.
- Dr. Edward Hipsher:** Mus.D. from Temple University. Associate of the Royal Academy of Music in London. Taught in a number of American colleges. Published many articles on music. His *American Opera and Its Composers* was the most comprehensive work in that field in his time. Served as Associate Editor of *The Etude* from 1920 to 1939. Initiated the Philadelphia concert series later managed by Emma Feldman.
- Lewis James Howell:** Baritone, teacher, composer. Directed various choral groups in the Philadelphia area, including the Glee Clubs of the University of Delaware.
- Lois Hedner:** Taught piano at Beaver College, Glenside, Pennsylvania.
- Elizabeth Steiner:** Violinist, teacher. Faculty member of the Settlement School in Philadelphia.

Rosalie Talone: Studied at Combs College of Music, Temple University, and the Eastman School of Music. Active in Music Teachers National Conventions and as Audition Chairman of Eastern Division, MTNA. Teacher of many outstanding students. Past President of Philadelphia Music Teachers Forum.

Dr. Virginia Brubaker: Pianist and organist. Trained at University of Rochester and The Eastman School of Music, Mus.D. from Boston University. Organized Music Department of Seoul Theological Seminary, South Korea. Now teaching at Asbury College, Wilmore, Kentucky.

Dr. Andor Kiszely: Director and Founder of Main Line Conservatory, Ardmore, Pennsylvania. Graduate of the Franz Liszt Royal Academy of Music, Budapest. Holds Artist's Diploma from State Academy of Music in Vienna. Studied with Zoltán Kodály and Hans Swarowsky. Soloist and chamber music performer. Lecturer on Bartók's piano music and the Kodály Method. Recognized by the Four Chaplains of Philadelphia for outstanding community service. Received the "Distinguished Teacher of the Year" award from Pennsylvania State Music Teachers Association and appointed "Master Teacher" by the American Music Scholarship Association.

Joseph Arcaro: Mus.B. and Mus.M. from Philadelphia Conservatory of Music. Studied with Olga Samaroff, Edward Steuermann, and Rosalyn Tureck. Faculty member of Philadelphia Conservatory of Music, Philadelphia Musical Academy, New School of Music, Immaculata College, and Temple University. Active as performer, teacher, and adjudicator in the Delaware Valley.

Evelyn C. Quick: Teacher, pianist. B.S.Ed. from the University of Akron, Ohio. Mus.B. and Mus.M. from Philadelphia

Conservatory of Music. Post-graduate studies at Columbia University. Active on the faculty of Philadelphia Conservatory of Music and the Philadelphia Musical Academy. Studied with Olga Samaroff. President of South Jersey Music Teachers' Association 1974-8.

Joy Miller Kiszely: Co-founder and Co-director of the Main Line Conservatory, Ardmore, Pennsylvania. Received musical training at Oberlin Conservatory of Music, Indiana University (Bloomington), and the Mozarteum (Salzburg). Has served in leadership roles in Pennsylvania State Music Teachers Association, the American Music Scholarship Association, and the Tri-County Concerts Association. Helped in establishing the student festivals for PMTA. The American Music Scholarship Association appointed her "Master Teacher" and the Pennsylvania State Music Teachers' Association named her "Distinguished Teacher of the Year" in 1982.

Sr. Jane McGettigan, S.S.J.: Mus.B. from Chestnut Hill College. M.A. from St. Charles Seminary. Post-graduate studies at Catholic University of America, Columbia University, and Westminster Choir College. Participated in the organization of the Bucks County Association of Piano Teachers. Active in the National Guild of Piano Teachers.

Geraldine Miller: B.A. from Ursinus College, Mus.B. in piano performance from the Philadelphia Conservatory of Music. Active in the Musical Coterie of Wayne, Pennsylvania, and the Music Study Club of Bryn Mawr, Pennsylvania. Also active in the administration of the Tri-County Concerts. Taught at the Lancaster Conservatory (Lancaster, Pennsylvania). Active on the Board of PMTA before assuming presidency in 1990.



Three American composers (LEFT TO RIGHT): Walter Piston, Roy Harris, and Richard Yardumian were guests at the MTNA convention in Philadelphia in 1961. PMTA members acted as aides to the guests at this affair and were responsible for convention publicity. (Photo courtesy of Rosalie Talone.)

PMTA CALENDAR

1963-1964

Tuesday, October 15, 1963

Reception 11:30 A.M.

Luncheon 12:00 Noon

New Century Club. 124 So. 12th St.

John Briggs - Guest of Honor

Author, Music Editor and Critic

Wednesday, November 20, 1963

The Junto

Julio Esteban

Graduate School - Peabody Conservatory

“Standards in Piano-Teaching, Application and Development.”

Sunday, December 8, 1963

Christmas Party, 216 So. 20th St.

Concert

Malvina Leshock, Pianist

Graciella Silvain Cappelli, Soprano

Reception 6 P.M.

220 So. 20th St.

Wednesday, January 15, 1964

The Junto

Business Meeting and Reports

Book Review - Mrs. Ruth Wells

Sunday, February 2, 1964

Auditions - 216 So. 20th St.

Sunday, February 16, 1964

3 P.M.

Recital - 1617 Spruce

Wednesday, March 18, 1964

10 A.M.

Panel Discussion

Mrs. Pearl Boyle, Mr. Irwin Gelber, Miss Ella

Ketterer, Mr. Clement Petrillo

March, Saturday 21st

2:30 P.M.

Greek Hall

Wanamaker's Store

Two-Piano and Concerti Concert

Wednesday, April 15, 1964

The Junto

Sylvia Szanto

“The Chopin Preludes”

Sunday, May 3, 1964

Auditions 216 So. 20th St.

Sunday, May 17, 1964

Recital - 1617 Spruce St.

Review of Publications and Musical Activities at all Meetings.

Philadelphia Music Teachers' Association

MUSIC TEACHERS' RALLY MEETING

TO DISCUSS MEANS OF

Protecting the Teachers' Business Interests

TUESDAY EVENING, APRIL 8th, 1913

8.15 P. M.

IN THE PRESSER BUILDING AUDITORIUM
ENTRANCE 1714 CHESTNUT STREET

Well-Known Speakers

MR. RICHARD ZECKWER	MR. W. WARREN SHAW
MR. GILBERT RAYMOND COMBS	MISS ABBIE WHINNERY
MR. LOUIS G. HEINZE	MR. RALPH KINDER
MR. PERLEY DUNN ALDRICH	MR. ROLLO MAITLAND
MRS. EMILY LORENZ BALL	

Music By

MRS. EMILY STOKES HAGAR	- - - -	Soprano
MR. WALTER G. CHARMBURY (Of Baltimore)	- - - -	Pianist

SPECIAL ATTENTION will be paid to a plan to prepare a suitable placard to hang in studios enabling teachers to combat the troublesome

MISSED LESSON PROBLEM

by making their patrons acquainted with the fact that the custom of teachers in all parts of the country is to insist upon payment for missed lessons.

Nation-wide publicity will be given to the results of this meeting through the musical papers and the event will be one of the most important we have conducted. It will be a meeting to be remembered and a large attendance is expected among the teachers who take a genuine interest in their business progress. *Come and bring a friend.*

If you desire to do your share in the fine work of the Philadelphia Music Teachers' Association simply send your name and the membership fee (\$1.00) to Mr. Frederick Maxson, Treasurer, 1003 South 47th Street.

JAMES FRANCIS COOKE,

President Philadelphia Music Teachers' Association

Let Philadelphia Lead in this Much-Needed Reform

PMTA CALENDAR

1973-1974

Wednesday, October 17th

10:15 p.m., Greek Hall
 Frances Clark and Louise Goss
 President and Vice President
 The New School for Music Study
 Princeton N.J.

Author, *The Frances Clark Library for Piano Students*.

Lecture - Demonstration:
 "Goals for Elementary and Intermediate
 Piano Students"

Wednesday, November 28th

10:15 a.m.
 Art Alliance, 251 S. 18th St.
 Dr. Marion Morrey Richter
 Chairman of Intern. Music Relations Dept.,
 National Federation of Music Clubs.

Lecture - Recital: "An Approach of Contemporary Piano Music - Considerations of Teaching and Interpretation"

Wednesday, January 16th

10:15, Greek Hall
 Julio Esteban
 Chairman of the Piano Dept.
 Peabody Conservatory of Music
 President of Music Teachers National Assoc.
 "Survey of Piano Technique"

Wednesday, March 20th

10:15, Greek Hall
 Joseph Bloch
 Faculty, The Juilliard School of Music
 Lecture - Recital: "Haydn Piano Sonatas - including additional works by the Italian and German precursors of Haydn"

Wednesday, April 17th

10:15, Greek Hall
 Business Meeting and Elections
 Leah Coron Saukkonen
 Faculty, Temple University:
 "Scandinavian Piano Music - Old and New Teaching Repertoire"
 Evelyn Quick:
 "Elementary and Intermediate Teaching Material by American Composers"

Sunday, April 21st

2:30 p.m.
 Philadelphia Musical Academy
 Student Recital Auditions

Sunday, April 28th

2:30
 Philadelphia Musical Academy
 Student Concerto and Ensemble Auditions

Sunday, May 5th

3:00
 Philadelphia Music Academy
 Student Recital

Sunday, May 19th

3:00
 Presser Hall, Temple University
 13th and Norris Sts., Philadelphia, Pa.
 Student Concerto & Ensemble Concert

At each regular meeting: Survey of Teaching Materials
 by Mr. Joseph Arcaro

Annual business meeting and elections: April 17th
 Wednesday, 10:15 a.m.

THE ETUDE.

PHILADELPHIA, PA., APRIL, 1891.

A Monthly Publication for the Teachers and Students of Music.

Subscription Rates, \$1.50 PER YEAR (payable in advance).
Single Copy, 15 cents.

The courts have decided that all subscribers to newspapers are held responsible until arrears are paid and their papers are ordered to be discontinued.

THEODORE PRESSER,

1704 Chestnut Street.

PHILADELPHIA, PA.

MUSICAL ITEMS.

[All matter intended for this Department should be addressed to Mrs. HELEN D. TRETTAR, Box 2920, New York City.]

HOME.

BOSCOVITZ is in London.

KANSAS CITY has a Ladies' Violin Club.

NEW YORK is talking of a Music Social Club.

MRS. GROVER CLEVELAND is studying the violin.

JOHANN STRAUSS' new waltz is called "Great Vienna."

"DER FREISCHUTZ" has been given 429 times in Vienna.

MR. E. B. PERRY, the Boston pianist, is giving 40 recitals in the South.

PHILADELPHIA is about to organize a local music teachers' association.

MRS. THURBER will bring a leader from Europe for her new National Orchestra.

SCHARWENKA visited the New England Conservatory in Boston and played to the students.

ARTHUR SULLIVAN's grand opera "Ivanhoe" is meeting with unqualified success from the English music public.

S. G. PRATT has in preparation his "Allegory of the War in Song," which will consist of songs of pathos and patriotism.

An effort is being made to induce Herr Scharwenka to become the head of a new Conservatory of Music in New York City.

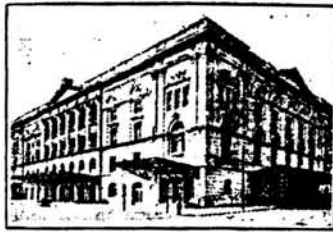
We learn from New York papers that Solomon Jadasohn has connected himself with Lambert's New York Conservatory of Music.

DE PACHMANN has signed a contract binding him to give another series of recitals in America next year, under his present management.

BLIND TOM, once more upon the stage, has lost none of his genius, although there were stories of his being retired in a pitiable imbecile and pauperized condition.

A new string quartet by Arthur Foote was performed for the first time at the concert in Boston on the 16th by the Kneisel Quartet. The adagio and the final allegro are especially praised.

THE international copyright law, recently passed by Congress, will go into effect July 1st. It is said that this law will induce many music publishers of Europe to establish branch houses in this country.



METROPOLITAN OPERA HOUSE
(CAPACITY 5000)

It is estimated that there are over 2000 teachers in the city and neighboring towns, many with international reputations; Philadelphia possesses a fine Symphony Orchestra; a magnificent Opera House and famous company; a large Academy of Music; a great University with a musical department; a number of flourishing conservatories; excellent Church and Organ attractions; an enormous Festival Hall already planned; Philadelphia Operatic Society giving Grand Opera on a large scale; numerous choral and singing societies; many active musical clubs; excellent free musical library facilities; Musical industries representing an investment of many million dollars. The cost of living is reasonable and the home surroundings make Philadelphia particularly desirable for lady pupils coming from a distance. Unparalleled free Summer Orchestral attractions. It will pay you to study in Musical Philadelphia.

Issued by the Publicity Committee of the Philadelphia Music Teachers' Association (Founded 1891)

Musical Philadelphia

All the Major Attractions of a World Music Centre, Combined with Economy and the Best in American Home Life. Philadelphia has Made Enormous Advances in Music in Recent Years.

Read the Following Carefully

OUR OPPORTUNITY

The great enthusiasm and interest manifested at the last Meeting of the Philadelphia Music Teachers' Association, (Founded 1891) has led to the adoption of the same subject, "More Publicity for Musical Philadelphia", at the meeting to be held in Estey Hall, Seventeenth Street corner of Walnut, February 7th, 1912, at 8.15 *tempo giusto*.

Several of Philadelphia's ablest musicians are deeply interested in this campaign to draw music students to Philadelphia. Among those who will take part are Dr. H. A. Clarke, Mr. N. D. Douty, Hahn String Quartette, Mr. M. Leefson, Mr. W. L. Nassau, Mr. E. Pearson and Mr. H. G. Thunder. Fine music and an informal social.

Whether member or not, you are most cordially invited to come and learn about the above "Musical Philadelphia" slips which will be circulated broadcast. They may be secured at printers' cost price—twenty-five cents a hundred (or cheaper in larger quantities) 200,000 will be circulated at once through the kindness of one publisher. This is only one of many excellent plans.

The membership should double this year. It will, if you do your share. One dollar sent to Mr. E. Wolsieffer, Secretary, at 1117 Chestnut Street, entitles you to all membership privileges, or, if you prefer, come to the next meeting February 7th, and join then. The association is doing real work and expects the hearty support of sincere Philadelphia music workers.

JAMES FRANCIS COOKE

President Philadelphia
Music Teachers' Association

Remember the night, the time and the place
February 7th, at 8.15, in the new Estey Hall.

Philadelphia Music Teachers Association

1991-92 Calendar and Board of Directors

DATES TO REMEMBER

- October 6**
DOROTHY SUTTON PERFORMANCE FESTIVAL
- October 16**
ANDOR KISZELY, JOSEPH ARCARO, SAMUEL HSU
- November 20**
FRANK R. WILSON
- January 15**
MAX RUDOLF
- February 2**
STUDENT AUDITION
- February 16**
STUDENT RECITAL
- March 18**
MARVIN BLICKENSTAFF
- April 12**
PERFORMANCE FESTIVAL
- April 15**
AMANDA VICK LETHCO
- BOARD MEETINGS**
September 11 February 5
December 4 June 3

PHILADELPHIA MUSIC TEACHERS ASSOCIATION

Board of Directors

- President** Mrs. Geraldine Miller
314 Kent Road
Bala Cynwyd, PA 19004
Phone: (215) 664-0819
- First Vice-President** Mrs. Barbara Williams
8313 Shawnee Street
Philadelphia, PA 19118
- Second Vice-President** Mrs. Joan Krzywicki
1102 Cromwell Road
Wyndmoor, PA 19118
- Membership Chairperson**
- Recording Secretary** Ms. Susan Nowicki
521 South 27th Street
Philadelphia, PA 19146
- Treasurer** Mr. Richard Rudin
47 Maplewood Mall
Philadelphia, PA 19144
- Corresponding Secretary** Mrs. Lydia McVay
2502 Huntingdon Pike
Huntingdon Valley, PA 19006
- Past President** Mr. Joseph Arcaro
101 West Fomance Street
Norristown, PA 19401
- Past President** Dr. Andor Kiszely
Main Line Conservatory of Music
27 West Lancaster Avenue
Ardmore, PA 19003
- Past President** Mrs. Joy Kiszely
Main Line Conservatory of Music
27 West Lancaster Avenue
Ardmore, PA 19003
- Past President** Sister Jane M. McGettigan S.S.J.
St. Jerome Convent
2930 Holme Avenue
Philadelphia, PA 19136
- Past President** Mrs. Evelyn Quick
523 Jessamine Avenue
Collingswood, NJ 08107
- Music Survey**
- Publicity Chairperson** Ms. Carol Wilson
212 Comet Lane N. Star
Newark, DE 19711
- Appointed Members** Ms. Donna Kay Croddy
Mr. Marc Dicciani
Dr. Maria Drake
Mrs. Frances Gage
Dr. Samuel Hsu
Mrs. Frances Schwartz
Ms. Julia Vieland

**PHILADELPHIA MUSIC TEACHERS ASSOCIATION
MEMBERS LIST 1991--1992**

Abromovic, Jr., Charles	Grin, Marina	Quigley, Nancy
Allen, Evelyn A.	Guerin, Jane Sanbuichi	Rahl, Patricia
Arcaro, Joseph	Haimbach, Marjorie	Rettew, Eunice C.
Ashcroft, Edna Mae	Haley, Elizabeth K.	Rodgers, Deborah Alvisi
Augsburger, Emma	Hamburg, Jeannine	Ronan, Lorraine M.
Barta, Daniel S.	Hornberger, Dorothy	Rosse, Michael D.
Bender, Aurelia C.	Horwitz-Daly, Marla	Rottenberg, Barbara R.
Bishop, Janice	Hsu, Dr. Samuel	Rudin, Richard
Bitler, Lois Anne	Ishido, Dr. Yukiko	Sablosky, Sara
Bozorth, Mignon	Jorgenson, Marilyn	Schoeniger, Jane
Brown, Kathy L.	Kershner, Ronald	Schwartz, Fran K.
Cautilli, Susan	Kiszely, Dr. Andor	Shapiro, Ellen
Chittum, Dr. Donald	Kiszely, Joy M.	Shadel, Dr. Michael
Clarke, Madeline E.	Krzywicki, Joan	Skutnick, Paula
Colonna, Marcella R.	Luskin, Carolyn	Snyder, Elizabeth J.
Croddy, Donna Kay	Marlowe, Rosanna	Solaiman, Lena
Dawson, Helen Marie	McGettigan, Sister Jane	Stevens, Dr. Willis A.
Denbo, Sylvia F.	McVay, Lydia F.	Strine, Elizabeth M.
Dicciani, Marc J.	Meadowcroft, Alberta K.	Talone, Rosalie M.
DiCicco, Paul Frances	Meyer, Frances	Taylor, Maria DelPico
Drake, Allison R.	Miller, Geraldine B.	Tucker, Frances R.
Drake, Dr. Maria E.	Munich, William F.	Vieland, Julia
Ericsson, Eileen G.	Nowicki, Susan	Wait, Janet
Fitzgerald, Kathleen	Nurmi, Ruth	Walinsky, Lou
Fox, Jean M.	Otey, Diane	Whitten, Benjamin
Gage, Frances Collyer	Otey, Dr. Orlando	Williams, Barbara M.
Gigliotti, Amelia	Pallata, Carolyn T.	Williams, Velma M.
Goldberg, Rae W.	Pascal, Jeanne L.	Wilson, Carol
Gorberg, Lorna A.	Pond, Marguerite E.	Woods, Janet L.
Gottshall, Nancy	Prichard, Charlotte, S.	Zeit, Ruth
Granahan, Sister Marilyn	Quick, Evelyn C.	Ziegler, Dorothea B.